



TECHNICAL INSIGHTS

Launching the Introspect ESP Software Directly from the Test Procedure Folder





Contents

Introduction	3
Opening Tests in Versions Preceding 21.3.....	3
Introducing the Introspect Launcher.....	5
Introspect Documents Folder Structure	6
Conclusion.....	9

Introduction

Introspect Technology's award-winning software, the Introspect ESP Software, is designed for users with widely varying backgrounds and expertise. The software offers an extremely intuitive interface, simultaneously with infinitely extensible capability, suitable from smaller to large-scaled companies in diversified industries. In a recent release of the Software, we created a new facility to launch the application directly from a Test Procedure folder instead of having to navigate to the executable or the Desktop shortcut. This Technical Insights brief introduces this new feature and also provides further insights into the global architecture of the Introspect ESP Software and its associated "Documents" folder path.

Opening Tests in Versions Preceding 21.3

In previous releases, to open a saved procedure on a PC, users were obligated to first launch the application's graphical user interface (GUI) and then had to choose the correct IESP form factor, as displayed in Figure 1.

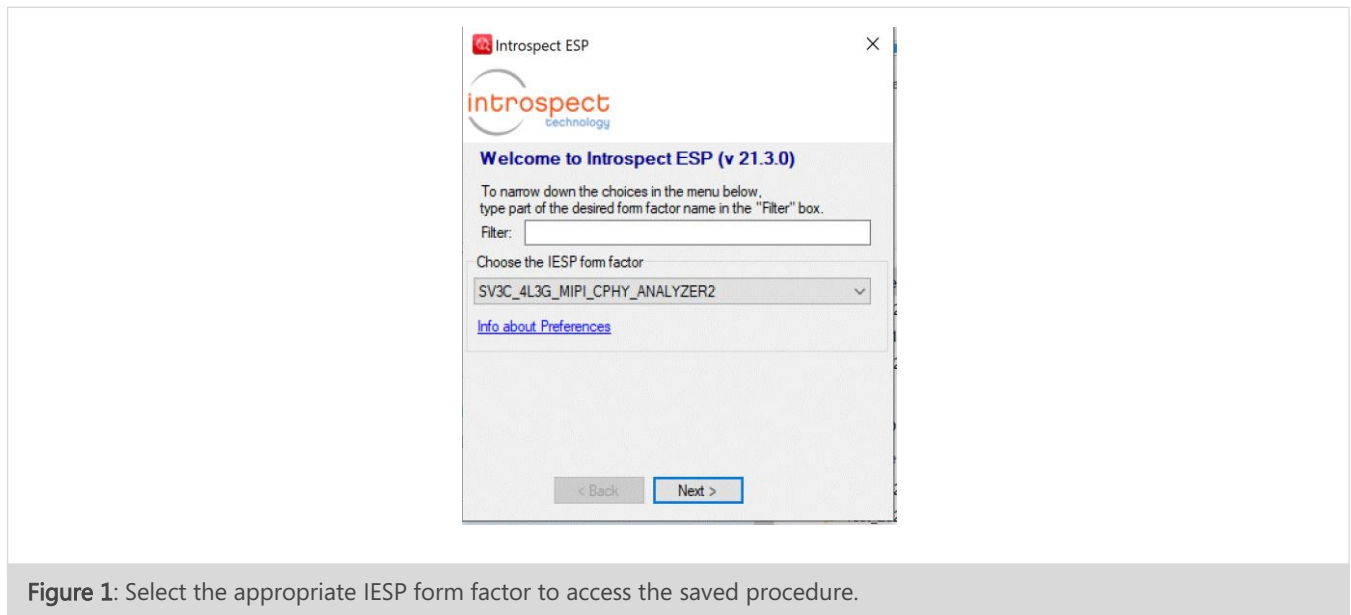


Figure 1: Select the appropriate IESP form factor to access the saved procedure.

From the selected form factor, users had to select “Open an existing Test folder”, as shown in Figure 2. To finally access the desired saved procedure, it was required to navigate through the folder of the procedure by clicking on “Look under Folder” as per Figure 3 shown below.

To increase productivity, Introspect Technology introduced a new application launcher start icon to the software, enabling even quicker access to saved procedures.

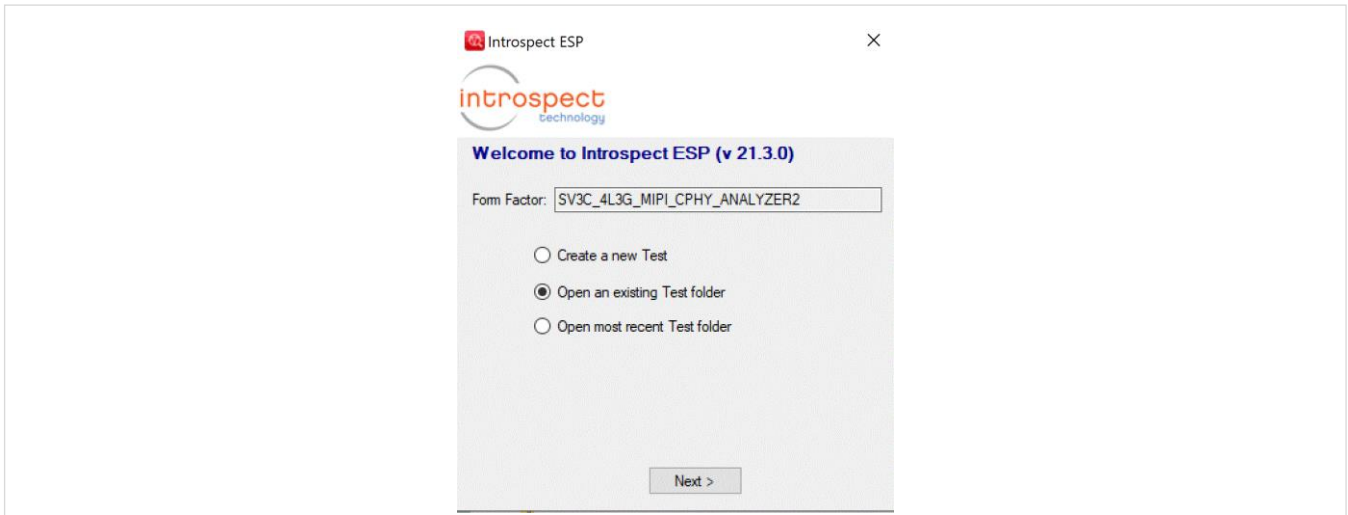


Figure 2: To access a saved procedure, select “Open an existing Test folder”.

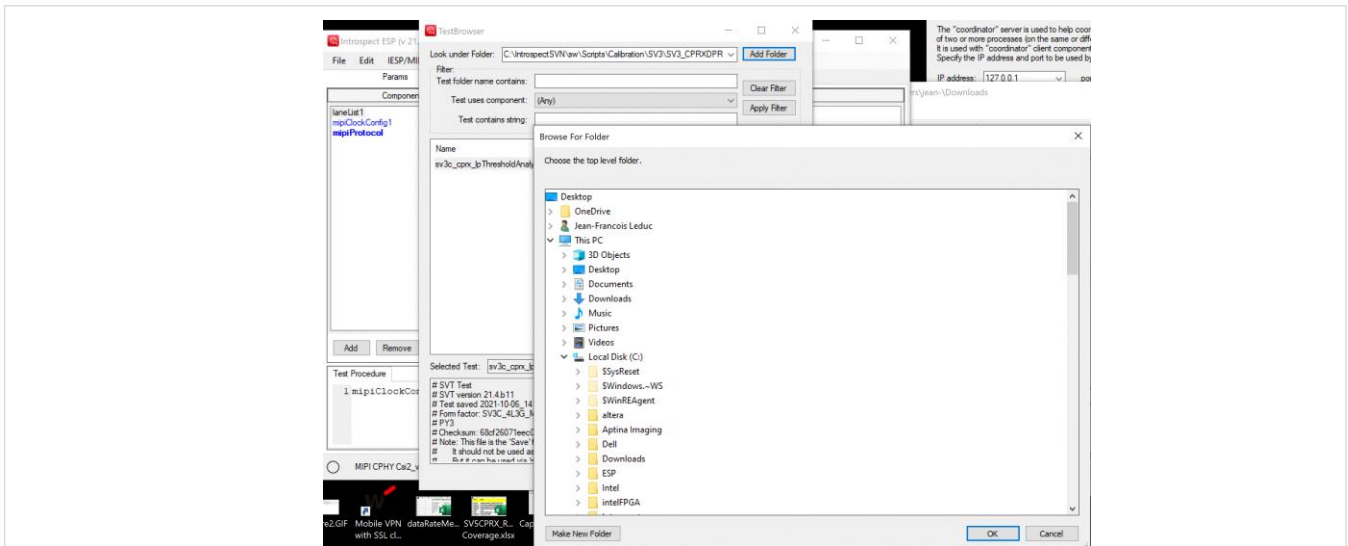


Figure 3: Select “Look under Folder” to access the desired saved procedure.

Introducing the Introspect Launcher

Starting in Version 21.3, a launcher icon is automatically added to the file path of the Test Procedure when the latter is saved. This is shown in Figure 4, where an icon bearing the Introspect ESP Software logo is displayed. Double clicking on this new icon will automatically launch the Introspect ESP Software and open the Test Procedure from which it was launched.

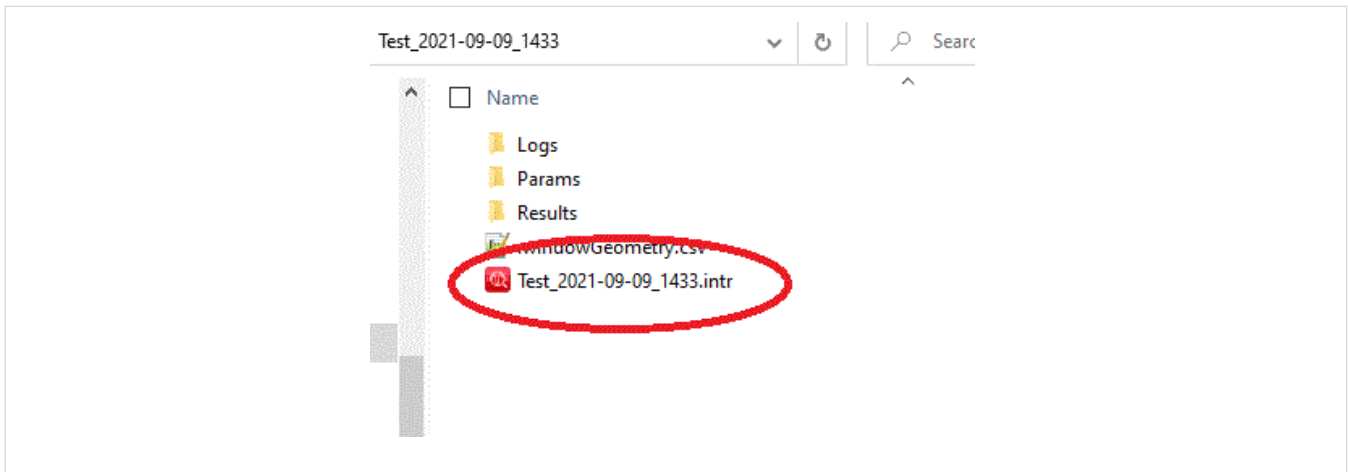


Figure 4: The Introspect ESP Software’s newest quick start icon is available in the procedure directory.

Additionally, if there is more than one version of the Introspect ESP Software installed on your PC, the launcher will automatically detect them, and it will offer you the choice of which version you want to use. This is illustrated in Figure 5, and then Figure 6 shows an example of how the Test Procedure opens instantly. Integrating the launcher icon in the Test Procedure directory optimizes time-efficiency when many procedures are to be opened throughout the day or when Test Procedures are shared between team members.

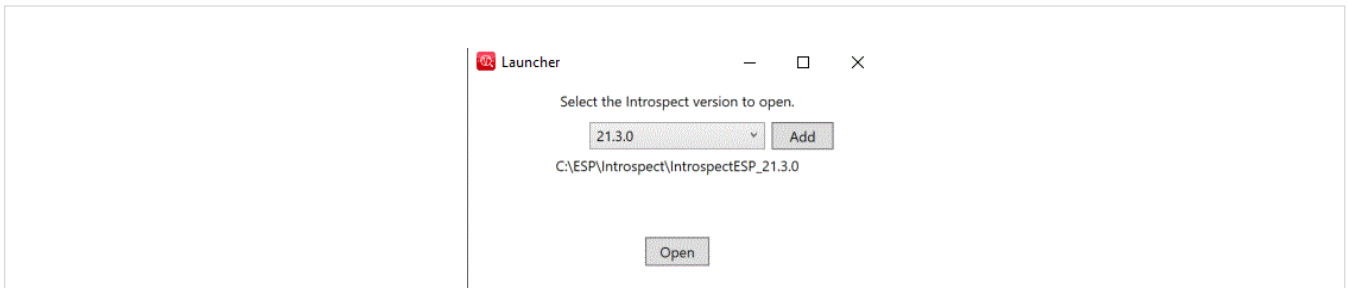


Figure 5: Users have the flexibility to select which revision of the software they would like to leverage.

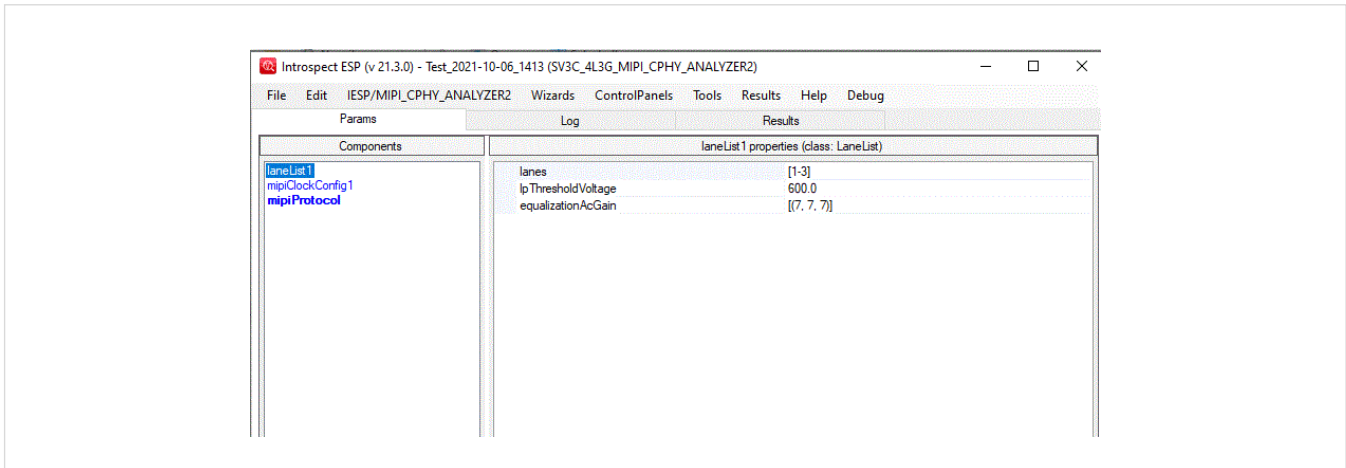


Figure 6: The saved procedure instantly opens with the correct formfactor.

Introspect Documents Folder Structure

When the Introspect ESP Software is installed for the first time on your PC, it creates a folder called Introspect under your user profile's "Documents" path:

C:\Users\< < YOUR ACCOUNT NAME > \Documents\Introspect

Note that in Windows 10, this path is displayed within File Explorer as "This PC > Documents > Introspect". Also note that this folder is not where the Introspect ESP Software application executable resides. Rather, this is a "Documents" folder that contains a lot of useful folders and features, and some of these are listed in this section. Figure 7 displays the folders found in the "Introspect" folder.

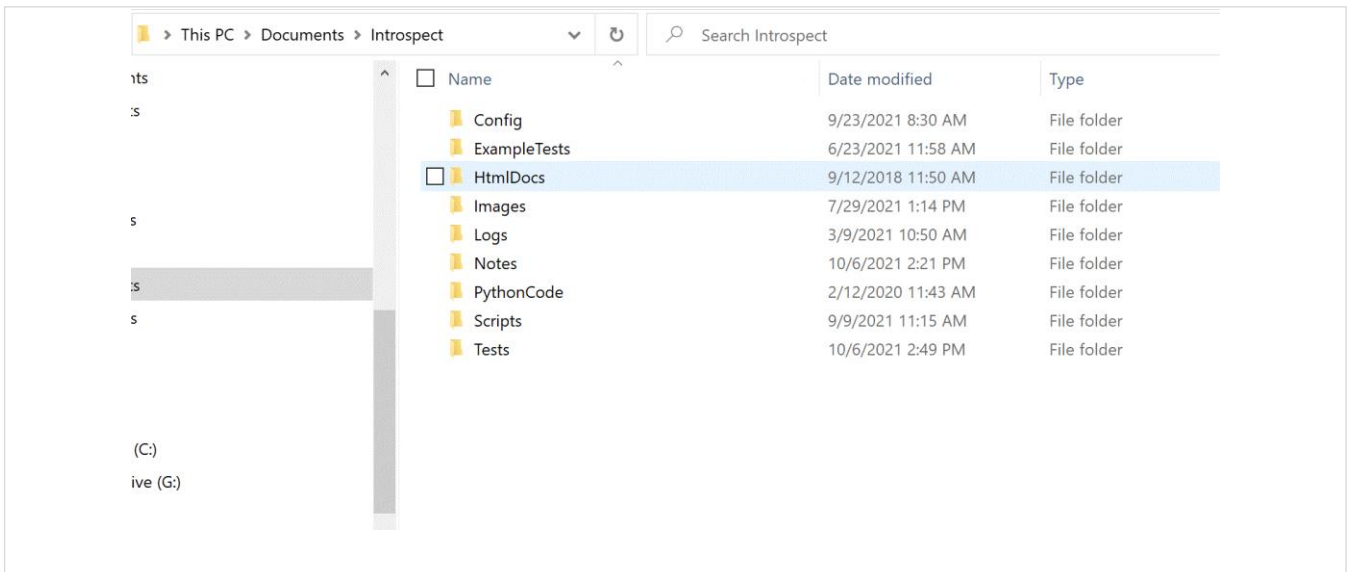


Figure 7: Folders found in the "Introspect" folder.

Some folders to take into consideration include:

- Tests folder: The Tests folder is the default location of all your Test Procedures when saved. They are accessible at any given point in time. We recommend saving your Test Procedures here so that they do not have any dependence on any version that is installed in your PC. All versions will automatically default to this folder.
- Images folder: The Images folder serves as the library of images necessary to a specific procedure. For instance, suppose the user adds an imageFiles in their Test Procedure, as shown in Figure 8. The software will include the Images folder to search for the source file of the image – in this case “IntrospectLogo.png” – without you having to specify a file path.

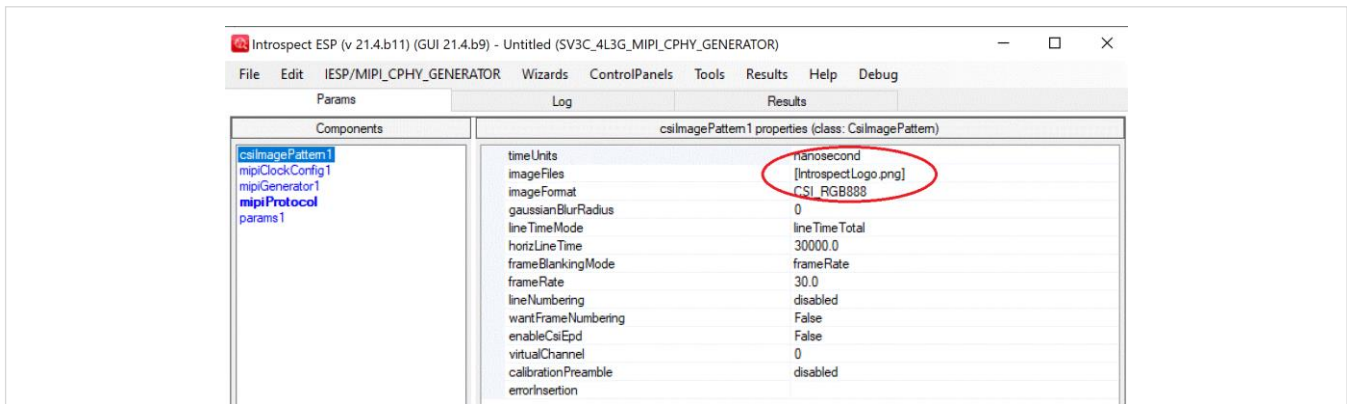


Figure 8: Images added to imageFiles will be searched through the Images folder.

- Logs folder: The Logs folder serves the purpose of finding all logs from the firmwareUpdater through Introspect > Logs > FirmwareUpdater. When opening this folder, all logs from the firmwareUpdater should be found. The Logs folder is most interesting when there are issues with updating the firmware.
- Scripts folder: The Scripts folder allows the user to add new Python scripts. Simply right click on a result in the GUI and run them directly in the GUI, as shown in Figure 9.

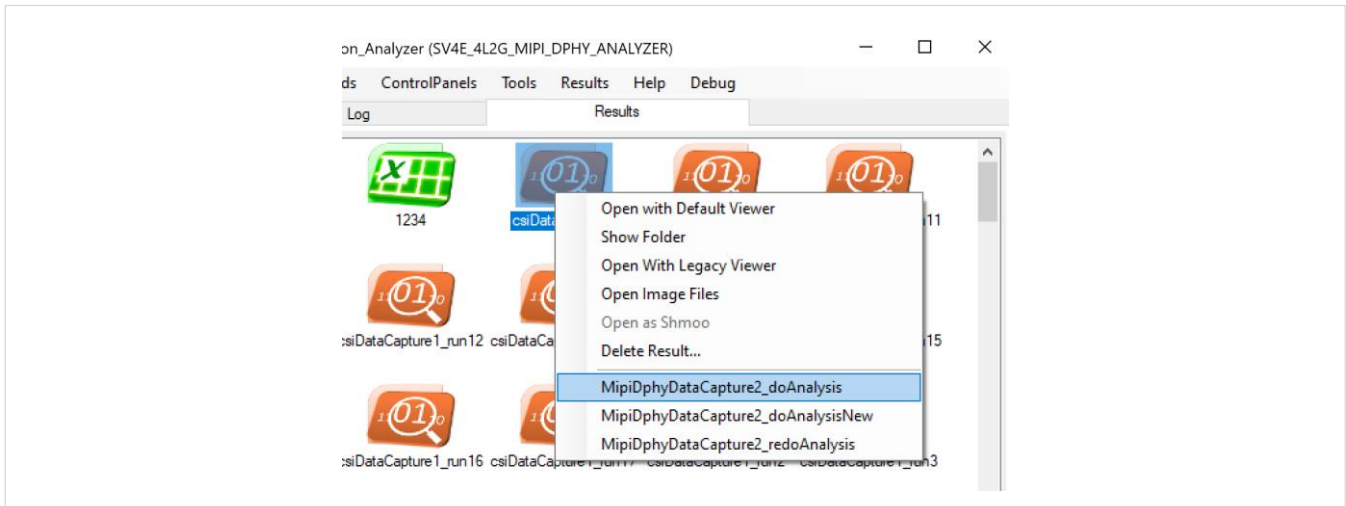


Figure 9: New Python scripts added to the Scripts folder can be run directly in the GUI.

Conclusion

Introspect Technology’s most recent modifications to the Introspect ESP Software and its “Documents” folder path are guaranteed to facilitate launching and managing your numerous applications throughout your day-to-day tasks. Further, starting the software directly from the Introspect Launcher in the Test Procedure Folder also assures optimized productivity and efficiency while testing new Python scripts. For any general inquiries about our software or other Introspect Technology products, please contact info@introspect.ca, or visit the Introspect Technology Help Centre.



REVISION NUMBER	HISTORY	DATE
1.0	Document release	October 19, 2021

The information in this document is subject to change without notice and should not be construed as a commitment by Introspect Technology. While reasonable precautions have been taken, Introspect Technology assumes no responsibility for any errors that may appear in this document.

The footer features a dark blue background with a stylized, glowing blue swirl pattern on the right side. On the left, there is a close-up photograph of a circuit board with various components and a blue label that reads "PANEL".

© Introspect Technology, 2021
Published in Canada on October 19, 2021

INTROSPECT.CA